



St Mary's Primary School Pupil Premium Strategy Statement



1. Summary information					
School	St Mary's Catholic Primary School.				
Academic Year	2021 - 2022	Total PP budget	£22140.00	Date of most recent PP Review	2020 - 2021
Total number of pupils	228	Number of pupils eligible for PP	28 (incl. EYFS)	Date for next internal review of this strategy	Autumn 2022

2. Key Stage 1		
	<i>Pupils eligible for PP</i>	<i>National Average</i>
% achieving in reading, writing and maths (Expected or above)	42%	
% making progress in reading (Expected or above progress)	58%	75%
% making progress in writing (Expected or above progress)	42%	70%
% making progress in maths (Expected or above progress)	58%	76%

2. Key Stage 2		
	<i>Pupils eligible for PP</i>	<i>National Average</i>
% achieving in reading, writing and maths (Expected or above)	29%	65%
% making progress in reading (Expected or above progress)	29%	73%
% making progress in writing (Expected or above progress)	29%	78%
% making progress in maths (Expected or above progress)	29%	79%

3. Barriers to future attainment (for pupils eligible for PP, including high ability)

In-school barriers (<i>issues to be addressed in school, such as poor oral language skills</i>)		
A.	17 PP chn are currently on the SEN register	
B.	6 PP chn are currently supported on a safeguarding plan (Team Around the Family, Child in Need or Child Protection)	
C.	The majority of PP chn are in Early Years and Key Stage 1	
D.	3 PP chn have Educational, Health and Care Plans	
E.	2 PP chn are on a reduced timetable	
F.	3 PP chn have English as an Additional Language	
G.	6 PP chn are from service families	
H.	5 PP chn have an attendance under 90%	
I.	9 chn from KS1 and KS2 are expected in Maths & Reading	
J.	7 chn from KS1 and KS2 are expected in Writing	
K.	1 child from KS1 and KS2 are in Pre-Key Stage Assessment	
L.	81% of PP chn said they liked school and 69% said they felt happy at school	
4. Desired outcomes		
	<i>Desired outcomes and how they will be measured</i>	<i>Success criteria</i>
A/I/J/K	To ensure increased progress for all PP chn, including those who are also on the SEN register	Pupils eligible for PP to make accelerated progress across each Key Stage in maths, reading and writing. Measured by teacher assessments and monitored through their Pupil Profile targets. Ensure all chn on the SEN register have necessary professionals involved and resources for their needs.

B.	To ensure PP chn in supporting plans, such as Child Protection, Child in Need and Team Around the Family receive appropriate support.	To ensure those PP chn who are on supported plans and safeguarding plans have access to the relevant professionals and resources for them to access the curriculum and improve their wellbeing.
C.	To ensure that PP chn in KS1 are closely monitored with regards to Reading, Writing and Maths	To ensure resources and interventions are put in place to support PP chn in KS1 to close the gap within Reading, Writing & Maths
D.	To ensure that all chn who are PP and have an EHCP are receiving required support	To ensure annual reviews and pupil profiles are completed. To ensure progress is being made and SMART targets are being set. To ensure PP chn have the relevant resources to support progress in their targets
E.	To ensure PP chn are receiving high quality teaching during their time in school.	To ensure reduced timetables are regularly reviewed. To ensure staff are trained in the relevant topics required. To ensure risk assessments are in place. To ensure weekly planning is thorough and includes interventions related to their targets.
F.	To ensure PP chn with English as an Additional Language are not disadvantaged regarding their learning	To ensure chn have access to visual resources to support their understanding. To ensure professionals indicate if interpreters are required for meetings. To ensure chn are given opportunities to practice their English skills through group or individual interventions and extra-curricular opportunities.
G.	To ensure service PP chn have a smooth transition into school and to support with their wellbeing when family members are on exercise	To ensure previous information transferred from previous settings, including any safeguarding information. To ensure relationships are developed with peers through social games and activities. To ensure home and school are fluid with their communication with regarding to exercises and long periods away. To ensure resources are available to support service chn.
H.	To ensure PP chn have an attendance above 93%	To ensure PP chn can access and attend school on a daily basis. To ensure TAF or other family plans are in place if required. To ensure good relationships between home and school are in place. To ensure relevant professionals are in place to support if required.
I.	To ensure higher levels of self-esteem and self-confidence for pupils eligible for PP	To ensure PP chn have access to the relevant professionals where necessary. To ensure PP chn have the resources to express themselves. To ensure PP chn have an enriching learning experience.

5. Planned expenditure

Academic year 2021-2022

The three headings below enable schools to demonstrate how they are using the pupil premium to improve classroom pedagogy, provide targeted support and support whole school strategies.

i. Quality of teaching for all

Desired outcome	Chosen action / approach	What is the evidence and rationale for this choice?	How will you ensure it is implemented well?	Staff lead	When will you review implement action?
To ensure increased progress for all PP chn, including those who are also on the SEN register to ensure increased	To ensure all staff are aware of PP children	All classrooms to have a SEN and PP list in their SEN Class Folders.	All staff in the school will be aware of the PP children throughout the school and the key targets for each child. List will be kept in the SEN folder.	Karen Driver (PP Lead)	Termly
	Classroom Support	PP chn will be able to access adult support in the classroom. This support may vary depending on need and subject. PP chn will have access to specific resources to support learning.	The Class Teacher will ensure learning is differentiated and appropriate resources are available. Support Staff approximately £1000.00 per staff member per annum	Class Teachers	Daily basis
	Attainment monitoring	PP chn will be monitored by Class Teachers via HelloData (Scomis). PP chn will be monitored via the PP Lead using a specific format. This will inform any specific interventions or further funding/EHCP application if necessary.	PP Lead will input Class Teacher data on a termly basis. All PP chn will have targets for Reading, Writing and Maths, these are reviewed on a termly basis. Some PP chn will have a Pupil Profile, again these are reviewed on a termly basis.	Karen Driver (PP Lead) Class Teachers	Termly
		School to purchase ProvisionMaps for whole school intervention monitoring, provision tracker and Pupil Profiles.	Specific training to be put into place for Staff to use Provision Tracker. Cost: £795.00 (3 yr	Karen Driver (PP Lead)	Daily/Termly

			subscription)		
To ensure higher levels of self-esteem and self-confidence for pupils eligible for PP	School Mental Health/Wellbeing Events: Make Me Smile Day	Year 6 and Year 3 PP chn to access Make Me Smile Day. Discussion on Mental health awareness and looking at the size of the problem strategy. Chn will take home a worry map to keep and use when required.	PP Lead Teaching & analysing results £250.00	Karen Driver (PP Lead)	Autumn Term 2021
	PC Ben	PP chn in KS1 take part in the activity and reading of PC Ben by our local PCSO Val Guest. Chn discuss the role of a police officer and what they can do to help. Chn are able to ask questions and further their knowledge of the police at an appropriate level. PCSO Val Guest will also complete further visits to build relationships with the children. School receive copies of PC Ben to keep in their library.	PP Lead to take part and oversee the delivery of session.	Karen Driver (PP Lead) PCSO Val Guest	Autumn Term 2021
To ensure PP chn are receiving high quality teaching during their time in school.	SLT observations	SLT complete regular lesson observations of Class Teachers. These are based on the School Development Plan Objectives.	SLT will review observations with individual staff and implement targets to improve if required.	SLT	Termly
	Book Scrutiny	SLT and Teaching Staff implement a book scrutiny to ensure all chn are receiving high quality teaching.	SLT will put in place changes to areas which require improvement and share good practice amongst teaching staff.	SLT	Termly
Total budgeted cost					£1200.00

ii. Targeted support

Desired outcome	Chosen	What is the evidence and rationale	How will you ensure it is	Staff lead	When will
------------------------	---------------	---	----------------------------------	-------------------	------------------

	action/approach	for this choice?	implemented well?		you review implementation?
To ensure higher levels of self-esteem and self-confidence for pupils eligible for PP	Chn to be able to access SEMH interventions where appropriate for their needs.	Chn identified as having low Self-esteem and wellbeing will be given opportunities to take part in Emotional Literacy Interventions. We currently offer the following interventions in school (please note interventions are based on staff ability): <ul style="list-style-type: none"> - Zones of Regulation - Think Good, Feel Good - Emotional Literacy - Spirals - Time to Talk - Clear Sky Play Therapy - Individual Therapy Journals 	Emotional Literacy Interventions usually take place once per wk for 30minutes. Cost: TA £10 per hour For 3 PP chn per year intervention cost: £1080.00	Karen Driver (PP Lead) Emotional Literacy Teaching Assistant to use SQC questionnaire which is completed by the teacher and parent	Termly
	Pets As Therapy	As a school we are exploring the use of Pets As Therapy to support SEMH and to encourage reading.	A free service. Currently on the waiting list		When Required
	Mental Health Support Team	A new mental health team to support early SEMH issues. This team work with parents and children together. Referrals can be made when required.	A free service		When Required
	Clear Sky Play Therapy	PP chn will have access to Clear Sky Play Therapy. We are currently funding 3 spaces. This is an increase from last year.	Clear Sky Play Therapy & Reports Cost:£60 per session 3 PP Chn for 1 year cost £6480.00		Weekly

	Chiltern Music Therapy	Specific PP chn with EHCP plans to complete a 6 week program of Music Therapy sessions. To support social skills and language skills.	Trained Therapist and reports Cost: £960.00		Termly
To ensure increased progress for all PP chn, including those who are also on the SEN register to ensure increased	Specific Interventions to Support Reading, Writing & Mathematics	The following interventions are available to support the Reading, Writing & Mathematics subjects: <ul style="list-style-type: none"> - Rapid Mathematics - Nessy – online programme - Sound Reading System - P.A.T Phonics - Numicon - Toe by Toe - Early Handwriting Tool Kit - Clicker - Write from the Start - Auditory & Memory Games - TT Rock Stars - Spelling Shed 	When required interventions are put in place to support Reading, Writing & Maths. These are carried out by trained staff.	Karen Driver (PP Lead) To input data into Provision Maps Software	Termly
	Numicon	PP chn will have the opportunity to engage in interventions to support their mathematical skills. Support Staff will have training to ensure they can deliver quality interventions.	SENCO to meet with teachers to select appropriate interventions for pupils. SENCO will carry out pre and post assessments to use to track and monitor progress SENCO/PP Lead to liase with Maths Leader to implement Numicon training for all teachers.	Impact measured by SENCO and inserted into Provision Maps software.	When Required
	KUMON	We want pupils to become independent, advanced learners with a positive attitude to learning.	All PP chn offered one subject at KUMON for one year.	KUMON teacher to share	

	<p>Nessy</p>	<p>The KUMON programs enable pupils to progress to an advanced level, at their own pace, so they can realise their potential and experience success.</p> <p>Chn who required support with their reading and spelling receive their own login to access nessy. This can also be accessed at home. 4 PP chn currently use this service.</p>	<p>Pupil Premium lead to meet with Kumon lead teacher and communicate regularly to discuss pupil progress.</p> <p>Engage with parents and pupils before Kumon begins to address any concerns or questions about the additional sessions.</p> <p>Cost for 1 subject Per annum: £750.00</p> <p>Cost per annum per child: £60.00</p>	<p>progress report with SENCO/PP Lead.</p> <p>Class Teacher & SENCO/PP Lead will be able to monitor progress through the programmes analysis.</p>	<p>Termly</p>
--	---------------------	---	---	---	---------------

To ensure increased progress for pupils eligible for PP funding.	CPD for TA's leading interventions. To purchase resources to support understanding through the use of concrete objects.	We want to train relevant adults in practices to provide stretch and encouragement for these pupils.	Teaching assistant (TA) CPD for TAs supporting the sessions and feedbacks to Class Teacher. Use tracking data to monitor progress and attainment.	Karen Driver (PP Lead)	Termly
To ensure PP chn have an attendance above 93%	PP chn who present with poor attendance are often already supported by a TAF plan	In some cases parent contracts are drawn up to improve attendance and avoid fines. PP chn are encouraged to look forward to events in school and praise is given for attendance. PP chn may require specific SEMH support from in school or other professionals. Together school, home and professionals work together to ensure chn are in school.	Attendance is monitored closely by Class Teachers, Office staff, SENCO/PP Lead. Reasons for absence are recorded and concerns logged in MyConcern software.	Karen Driver (SENCO/PP Lead) Class Teachers	Daily
To ensure PP chn with English as an Additional Language are not disadvantaged regarding their learning	Chn may require more adult input in the early stages of starting school with EAL.	Chn may need specific interventions to improve their English. Picture books with everyday vocabulary, bilingual touch pen resources, visual timetables and sign support. Referrals to professionals will indicate if interpreters are required for medical appointments etc.	Teaching staff, SENCO/PP Lead will ensure that good relationships are formed between home and school. Face to face meetings are usually preferred with English as an Additional Language. Important information may need to be reinforced by extra correspondence.	Teaching Staff, School Office & SENCO/PP Lead	Daily

<p>To ensure that all chn who are PP and have an EHCP are receiving required support</p>	<p>PP chn and their families may need extra support to ensure they receive appointment letters and reports.</p>	<p>Although the EHCP has specific funding for resources and support, personal budgets maybe required. SENCO/PP Lead will ensure that paper copies of reports are communicated with home.</p>	<p>SENCO/PP Lead to ensure practices are explained to parents regarding EHCP procedures. To incorporate any professionals involved in EHCP support with family plans such as Team Around the Family, Child in Need and Child Protection.</p>	<p>SENCo/PP Lead</p>	<p>When Required</p>
<p>To ensure service PP chn have a smooth transition into school and to support with their wellbeing when family members are on exercise</p>	<p>SENCO/PP Lead will ensure that safeguarding and attainment information is received from previous settings. Further communication maybe required. SENCO/PP Lead and Class Teachers to build good relationships with home. To communicate any exercises or long periods of absence</p>	<p>Preparation for service chn can be short. There may not be time for pre-visits to school. Teaching Staff to ensure that chn have opportunities to develop their relationships with their peers through specific activities. To ensure parents receive all joining materials for school. For children to be able to access books regarding parents working away. For SENCO/PP Lead to use materials from the Army Family Federation regarding support for families and children.</p>	<p>Chn will complete a Pupil Voice questionnaire and this will be monitored termly. Class Teachers will access data from Scomis. SENCo/PP Lead will ensure any safeguarding concerns are monitored and information passed onto Class Teachers.</p>	<p>SENCO/PP Lead Class Teachers</p>	<p>Termly</p>
<p>To ensure PP chn in supporting plans, such as Child Protection, Child in Need and Team Around the Family receive appropriate support.</p>	<p>SENCO/PP Lead to attend meetings, liaise with Class Teacher and keep good relationships with home and school. SENCO/PP Lead to ensure the child's voice is captured and heard in meetings.</p>	<p>Using the Pupil Voice Questionnaire, 3 Houses, Fairies & Wizards approaches to capturing the child's voice. For meeting minutes to be uploaded onto MyConcern. For school to work in partnership with professionals and family to ensure PP chn on plans are</p>	<p>Chn to communicate their thoughts and feelings with SENCO/PP Lead, Class Teachers and adults they trust. Chn and their families will complete their plan and either step down or no longer need any further action.</p>	<p>Lead Professionals SENCO/PP Lead Class Teachers</p>	<p>Daily</p>

		receiving the support they need.	Chn and families achieving their targets set by the plan.		
Total budgeted cost					£12000.00
iii. Other approaches					
Desired outcome	Chosen action/approach	What is the evidence and rationale for this choice?	How will you ensure it is implemented well?	Staff lead	When will you review implementation?
To ensure higher levels of self-esteem and self-confidence for pupils eligible for PP	Financial support for residential trips in Years 4, 5 and 6. Additional extra curricular activities for all PP pupils.	We want all pupils to have the opportunities to participate in residential activities in order to become more confident and resilient learners as well as to develop self-esteem. Financial support for PP chn who are undertaking school visits. PP chn to be offered Cherwell Holiday Club spaces during holiday periods.	Class teachers to talk to pupils before and after residential trips. Feedback from chn and parents regarding the experience.	Karen Driver (PP Lead)	When Required

Total budgeted cost	£1500.00
----------------------------	-----------------

6. Review of Expenditure

Academic year	2021-2022	Number of Pupil Premium Children: 25
----------------------	------------------	---

i. Quality of teaching for all

Desired outcome	Chosen action / approach	Estimated Impact: Did you meet the success criteria?	Lessons Learned	Cost
To ensure increased progress for all PP chn, including those who are also on the SEN register	To ensure all staff are aware of PP children	All staff have a current list in the front of their Class SEN folder. This identifies children who are identified as SEN and or PP. During safeguarding training, PP and SEN are identified to ensure all staff are aware of chn.	To continue this practice	
		Training completed with Staff to create and review Pupil Profiles within Provision Tracker. Cost: £795.00 (3 yr subscription)	Reminder sessions were required for staff with SENCO. This will need to be repeated for September 2022 Provisional dates have already been made for training	£1075.00 (training and software cost)

--	--	--	--	--

Table showing Pupil Premium end of term assessments in Reading, Writing & Mathematics.

		Maths			
		Working Towards	Expected	Greater Depth	Expected +
Autumn	Number of Children	16	9	0	9
	(Automatic)	60%	36%	0%	36%
Spring	Number of Children	11	14	0	14
	(Automatic)	52%	67%	0%	67%
Summer	Number of Children	11	13	1	14
	(Automatic)	52%	62%	5%	67%

		Reading			
		Working Towards	Expected	Greater Depth	Expected +
Autumn	Number of Children	16	9	0	9
	(Automatic)	60%	36%	0%	36%
Spring	Number of Children	11	14	0	14
	(Automatic)	52%	67%	0%	67%
Summer	Number of Children	11	13	1	14
	(Automatic)	52%	62%	5%	67%

		Writing			
		Working Towards	Expected	Greater Depth	Expected +
Autumn	Number of Children	18	7	0	7
	(Automatic)	68%	28%	0%	28%
Spring	Number of Children	11	14	0	14
	(Automatic)	52%	67%	0%	67%
Summer	Number of Children	13	12	0	12
	(Automatic)	62%	57%	0%	57%

- Pupil Premium expected levels in Mathematics and Reading increased from 36% to 62%
- Pupil Premium expected levels in Writing increased from 28% to 57%
- 1 PP child has been assessed as Pre-Key Stage Levels, professionals are being consulted on provision going forward.

To ensure higher levels of self-esteem and self-confidence for pupils eligible for PP

3 PP Chn are being supported by the Social Care Team

1 PP child is being supported by the SAFE! Project for their Social, Emotional and Mental Health Needs.

All Year 6 chn and Year 3 chn took part in the Make Me Smile Project to promote awareness and develop knowledge of mental health.

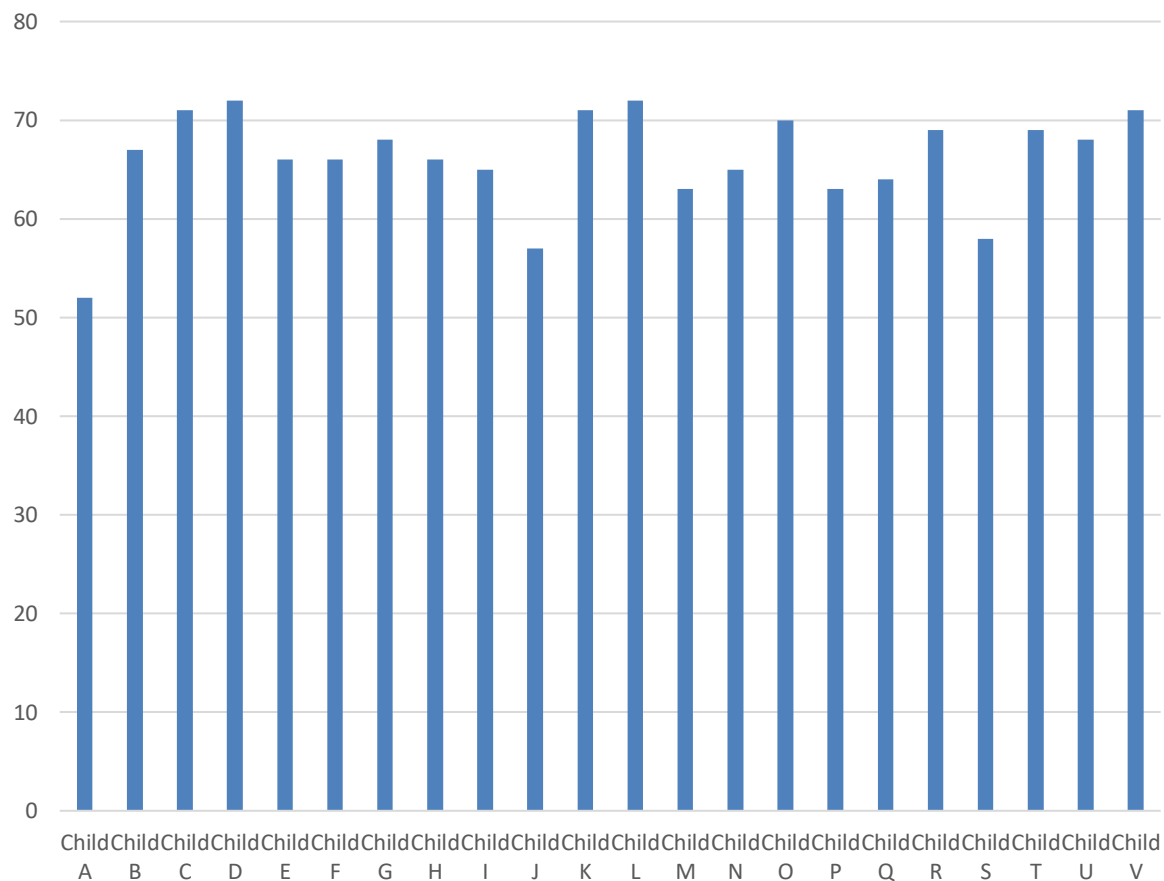
All chn completed a Pupil Voice questionnaire each term to monitor their SEMH views of school.

All PP chn have had access to adult support in the classroom. This support varied depending on need and subject.

PP chn in KS1 & EYFS took part in the activity and reading of PC Ben by our local PCSO Val Guest. Chn discussed the role of a police officer and what they can do to help. Chn had opportunities to ask questions and further their knowledge of the police at an appropriate level. PCSO Val Guest also completed further visits to build relationships with the children. School received copies of PC Ben to keep in their library.

Make Me Smile Project £356.12

Pupil Premium SEMH Questionnaire 2021-2022
(Maximum score 72)



- 22 Pupil premium children completed all three social, emotional and mental health questionnaire. The ideal score is 72.
- 8 chn required SEMH support from staff due to family illness or changes at home
- 1 child received Clear Sky Play Therapy
- 5 chn are supported on social care plans
- 5 chn are service families, who have experienced active periods of deployment
- 1 child is being supported by the Mental Health Support Team

To ensure PP chn are receiving high quality teaching during their time in school.

SLT and SENCo to complete a book scrutiny

SLT and SENCo completed a book scrutiny.
Total number of Pupil Premium:
25

Summary:

- Looking at the quantity of work, quality of work, next steps given, and progress made, pupil premium

£ 112.00

		<p><i>Number of pupils who are SEN and PP: 14</i></p> <p><i>Forces Pupil Premium: 5</i></p> <p><i>EYFS: 6</i></p> <p><i>Year 1: 2</i></p> <p><i>Year 2: 10</i></p> <p><i>Year 3: 1</i></p> <p><i>Year 4: 3</i></p> <p><i>Year 5: 2</i></p> <p><i>Year 6: 1</i></p>	<p>and SEN pupils are in line with others in cohort in literacy. Progress is appropriate and evident.</p> <ul style="list-style-type: none"> The reasoning behind pupils being pupil premium is varied, as is the plan for expenditure for these pupils. Needs are largely non-academic which is reflected in their work. <p>Next Steps:</p> <ul style="list-style-type: none"> To continue to be aware of every individual pupil and how their progress can be improved. 	
Total cost				£1543.12
ii. Targeted support				
Desired outcome	Chosen action / approach	Estimated Impact: Did you meet the success criteria?	Lessons Learned	Cost

<p>To ensure higher levels of self-esteem and self-confidence for pupils eligible for PP</p>	<p>Chn to be able to access SEMH interventions where appropriate for their needs.</p>	<p>Chn identified as having low Self-esteem and wellbeing will be given opportunities to take part in Emotional Literacy Interventions. We currently offer the following interventions in school (please note interventions are based on staff ability):</p> <ul style="list-style-type: none"> - Zones of Regulation - Think Good, Feel Good - Emotional Literacy - Spirals - Time to Talk - Clear Sky Play Therapy - Individual Therapy Journals <p>Due to identified SEMH needs, the following was accessed:</p> <p>1 PP child accessed the Mental Health Support Team and is still in progress of support</p> <p>1 PP child completed a year of Clear Sky Play Therapy Sessions</p> <p>7 PP Chn completed the Introduction to the Zones of Regulation</p> <p>12 PP chn required Emotional Literacy support intermittently throughout the year</p> <p>2 PP chn required regular Emotional Literacy Support through intervention</p> <p>6 PP Chn completed the Time to</p>		<p>Clear Sky Play Therapy £65 per session per child = £1885.00</p> <p>Zones of Regulation Intervention £336.00</p> <p>Emotional Literacy Support (This is required as and when needed)</p> <p>Emotional Literacy Intervention £100.00</p> <p>Time to Talk Intervention £336.00</p>
--	---	---	--	--

<p>To ensure increased progress for all PP chn, including those who are also on the SEN register to ensure increased</p>	<p>Specific Interventions to Support Reading, Writing & Mathematics</p>	<p>Talk Program in Early Years</p> <p>The following interventions are available to support the Reading, Writing & Mathematics subjects:</p> <ul style="list-style-type: none"> - Rapid Mathematics - Nessy – online programme - Sound Reading System - P.A.T Phonics - Numicon - Toe by Toe - Early Handwriting Tool Kit - Clicker - Write from the Start - Auditory & Memory Games - TT Rock Stars - Spelling Shed <p>3 out of 4 PP Chn improved their reading and spelling school on Nessy</p>	<p>Staff to be further trained on Clicker Software</p> <p>Toe by Toe Program – this is not a very engaging program. We will review whether we continue to offer this.</p>	<p>Clicker Software Purchased 3 Year subscription £600.00</p> <p>Nessy Subscription for 4 PP chn £66.00</p> <p>Sound Reading System £646.58</p> <p>PAT Phonics £25.00</p>
--	--	---	---	---

<p>To ensure PP chn have an attendance above 93%</p>		<p>17 PP chn have an attendance above 93%</p> <p>2 PP child are being support by a Child Protection Plan or a Child In Need Plan to support attendance</p> <p>1 PP child – A referral has been made to the school attendance team</p> <p>5 PP Chn contracted chicken pox</p> <p>3 PP Chn contracted Covid</p>	<p>Social stories, early phone calls, social care support and home visits have been conducted to support attendance.</p>	
<p>To ensure PP chn with English as an Additional Language are not disadvantaged regarding their learning</p>		<p>Mrs Driver attended medical appointments to support parents. Mrs Driver supported the communication and information sharing at these appointments Mrs Driver also arranged translators for medical appointments</p>	<p>Translators did not always arrive at appointments.</p>	<p>£112.00</p>
<p>To ensure that all chn who are PP and have an EHCP are receiving required support</p>	<p>PP chn and their families may need extra support to ensure they receive appointment letters and reports.</p>	<p>1 PP Child has an Educational, Health and Care Plan</p> <p>1 PP Child has Additional Funding</p> <p>Annual Reviews have been completed. Support recommended is introduced as required. External agencies then provide us with support throughout the year e.g. SENSS Communication & Interaction Team</p>	<p>Mrs Driver to complete training to support staff regarding EHCP's and understanding outcomes.</p>	<p>£56.00</p>
<p>To ensure service PP chn have a smooth transition into school and to</p>	<p>SENCO/PP Lead will ensure that safeguarding and attainment information</p>	<p>Staff request that parents communicate when there are periods of deployment. Staff ensure that they monitor children closely</p>		

support with their wellbeing when family members are on exercise	is received from previous settings. Further communication maybe required. SENCO/PP Lead and Class Teachers to build good relationships with home. To communicate any exercises or long periods of absence	and ensure they are available for SEMH support. There have been deployments this year for service children.		
To ensure PP chn in supporting plans, such as Child Protection, Child in Need and Team Around the Family receive appropriate support.	SENCO/PP Lead to attend meetings, liaise with Class Teacher and keep good relationships with home and school. SENCO/PP Lead to ensure the child's voice is captured and heard in meetings.	2 PP chn are being supported on a Child Protection Plan 1 PP child is being supported by a Child In Need Plan All chn are closely monitored and professionals communicate with each other on a regular basis. Mrs Driver attends Core Groups and Conferences. Mrs Driver uses the 3 houses approach to capture the child voice.		£588.00
Total budgeted cost				£4780.58
iii. Other approaches				
Desired outcome	Chosen action / approach	Estimated Impact: Did you meet the success criteria?	Lessons Learned	Cost
To ensure higher levels of self-esteem and self-confidence for pupils eligible for	Financial support for residential trips in Years 4, 5 and 6.	All PP parents have been given FSM voucher codes for Cherwell Holiday Clubs.		Chiltern Music Therapy - £960.00 Kumon Sessions - £924.00

PP	Additional extra curricular activities for all PP pupils.	2 PP chn families accessed Food Bank Vouchers 3 PP chn accessed Chiltern Music Therapy 3 PP Chn accessed Kumon support		Arch Reader - £450.00 School Trips/visits - £150.00 Holidays Clubs - £105.00
To ensure PP chn are receiving high quality teaching during their time in school.	Oxfordshire Inclusion Team Package & Support Educational Psychologist	Mrs Driver attended OXSIT Briefings and sought advice on throughout the year from the service 1 PP child required access to the Educational Psychologist. Recommendations were made to support the child and further funding was secured.		Foundation Package for OXSIT Cost per year: £300.00 Educational Psychologist appointment, observation & Reports: £500

Total budgeted cost

£3434.00